

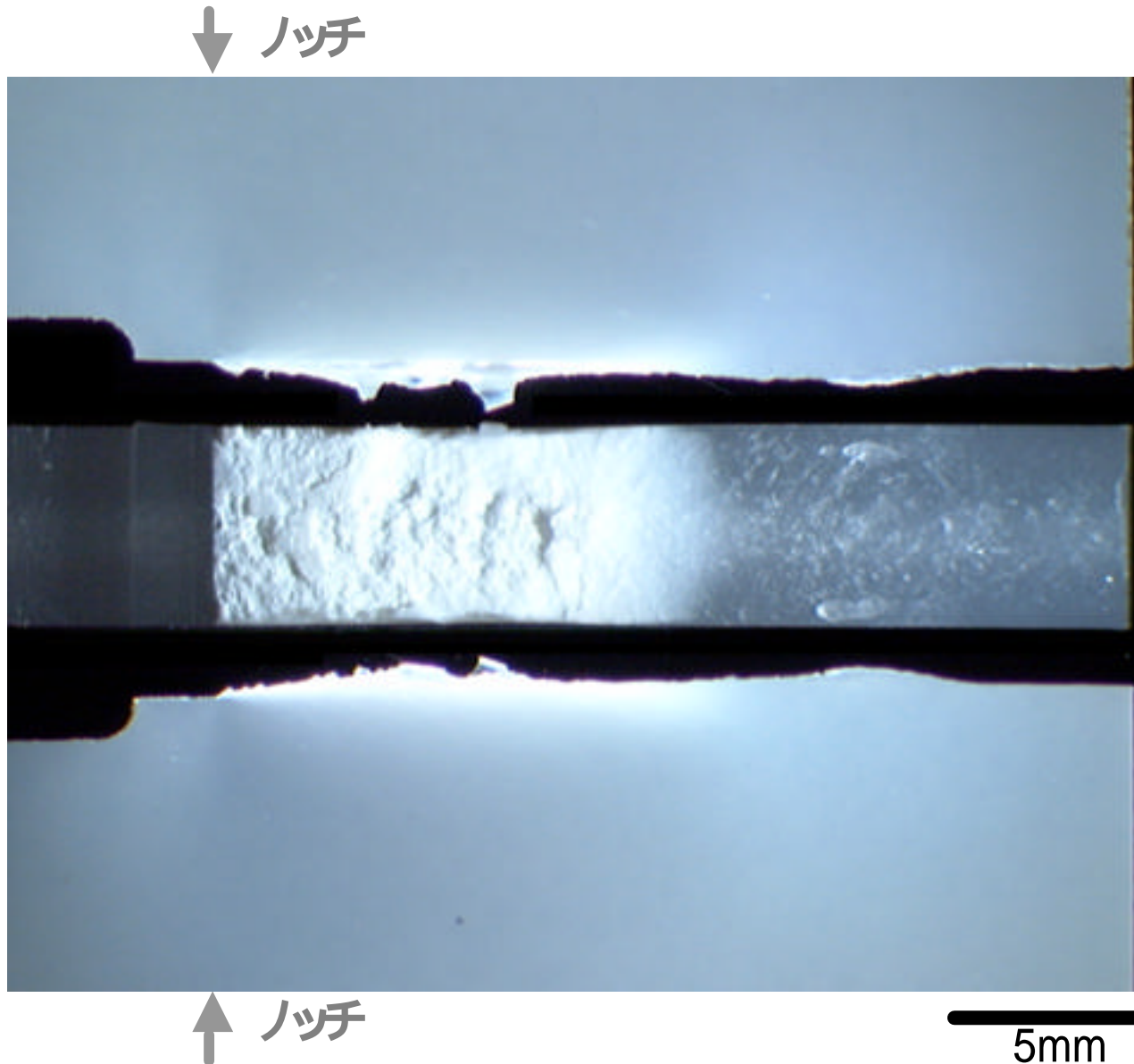
側面



破面



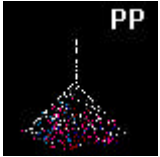
側面



破壊の進行方向

・材

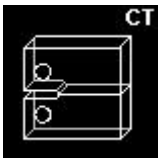
料



・試験方法



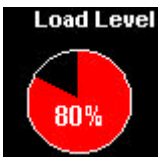
・試験片  
(厚さ B=5mm)



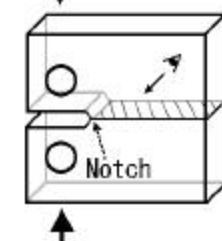
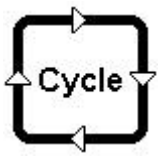
・試験温度

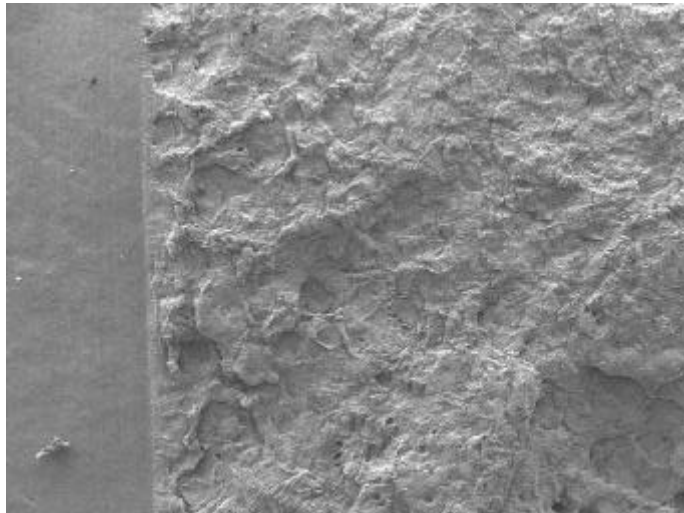


・負荷荷重レベル



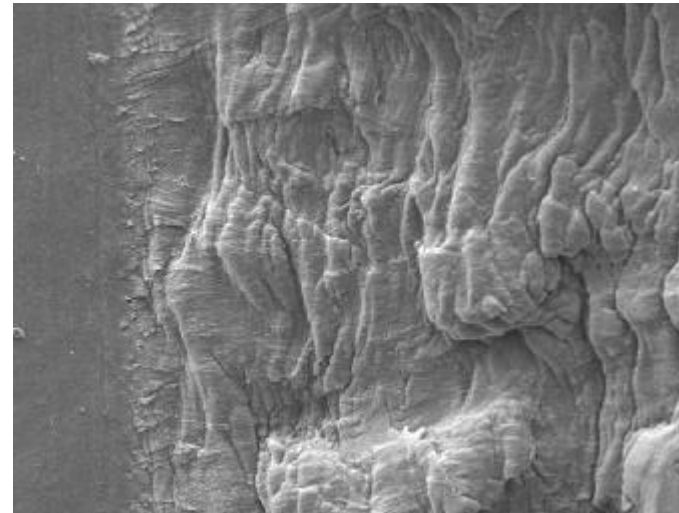
・破断サイクル  
(20188)





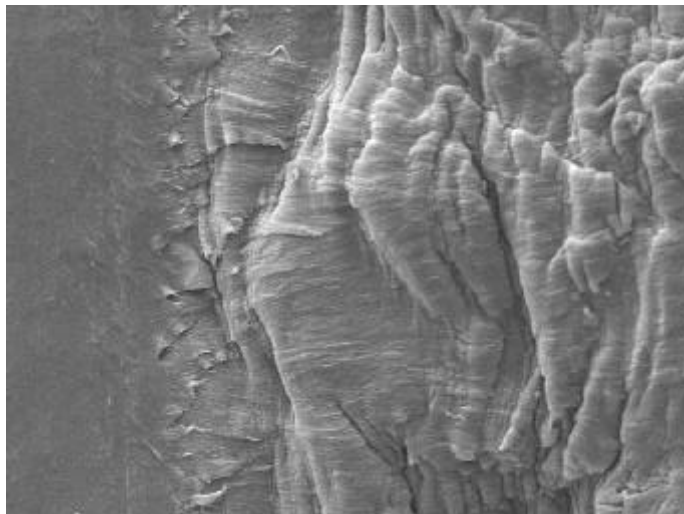
(a) 破壊起点近傍

500 μm



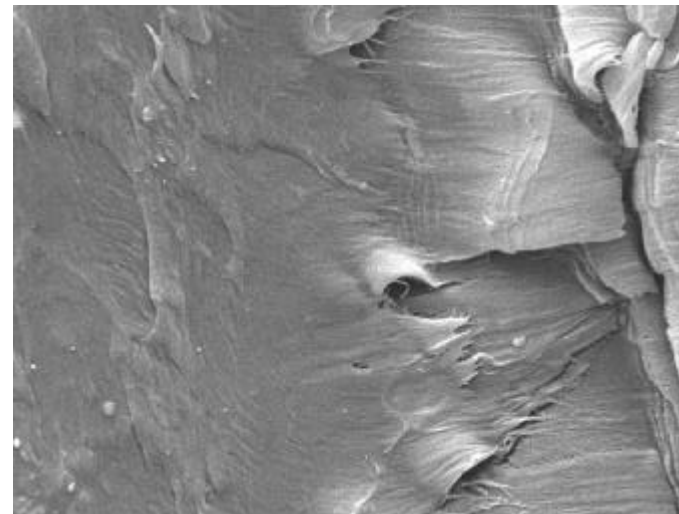
(b) 拡大

50 μm



(c) 拡大

20 μm



(d) 拡大

5 μm