

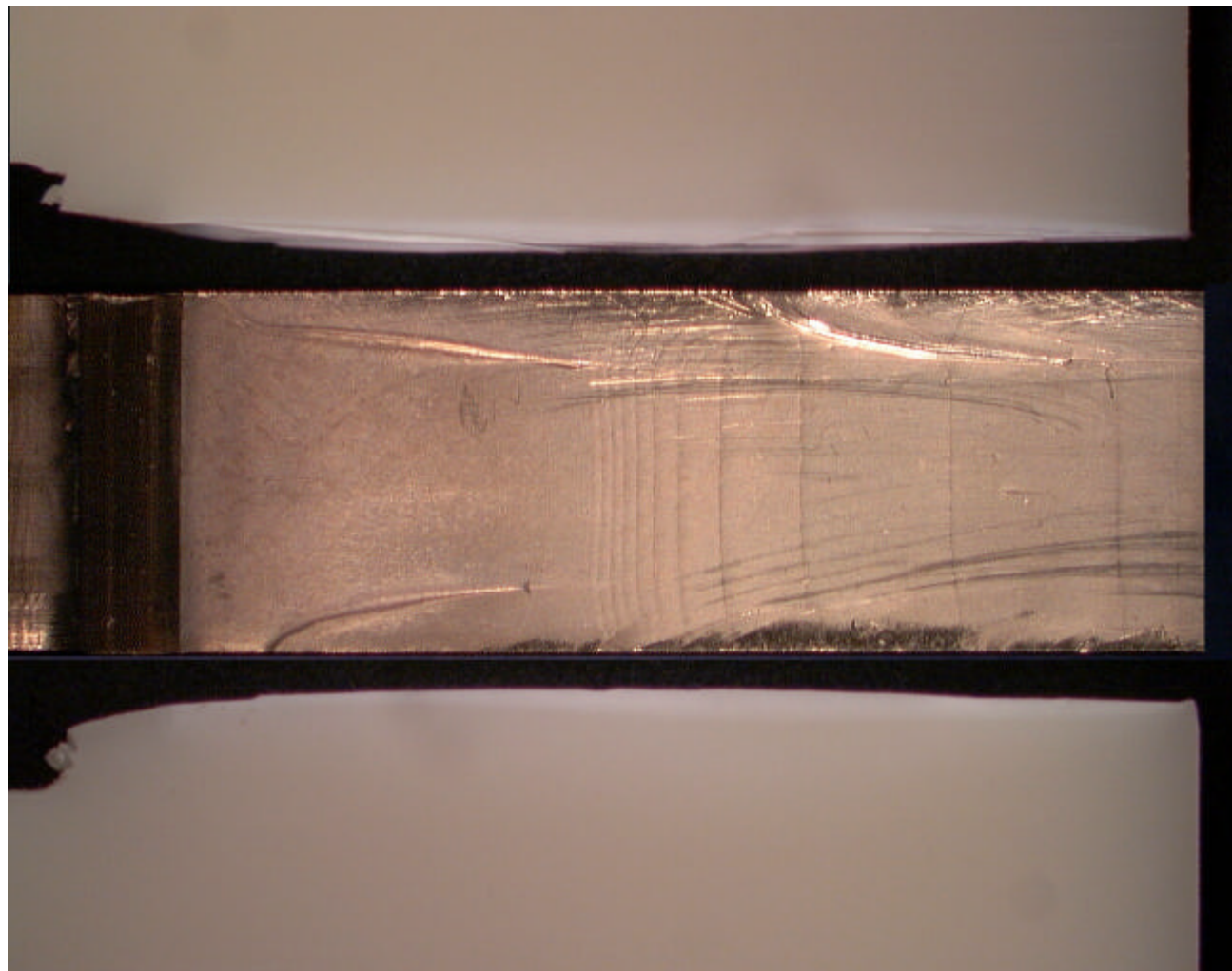
側面



破面



側面

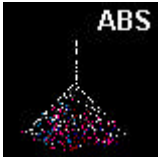


↑ ノッチ

5mm

破壊の進行方向

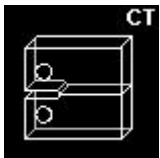
・ 材 料



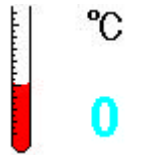
・ 試 験 方 法



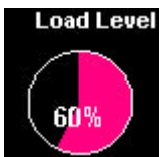
・ 試 験 片



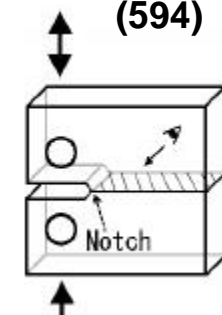
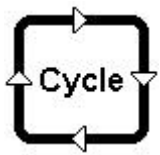
・ 試 験 温 度

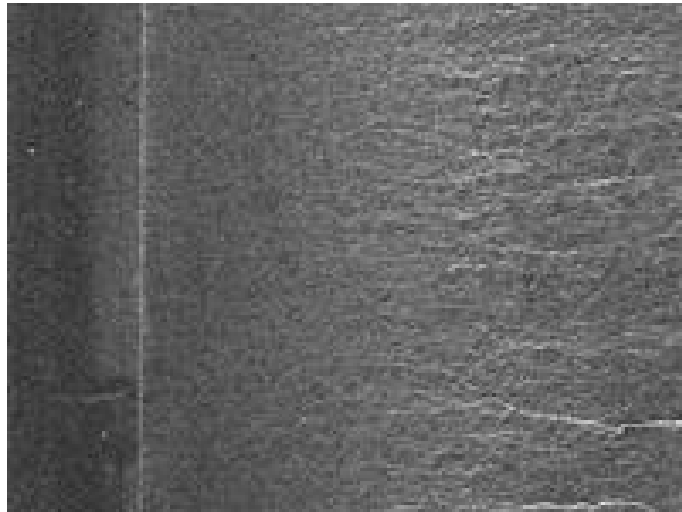


・ 負荷荷重レベル



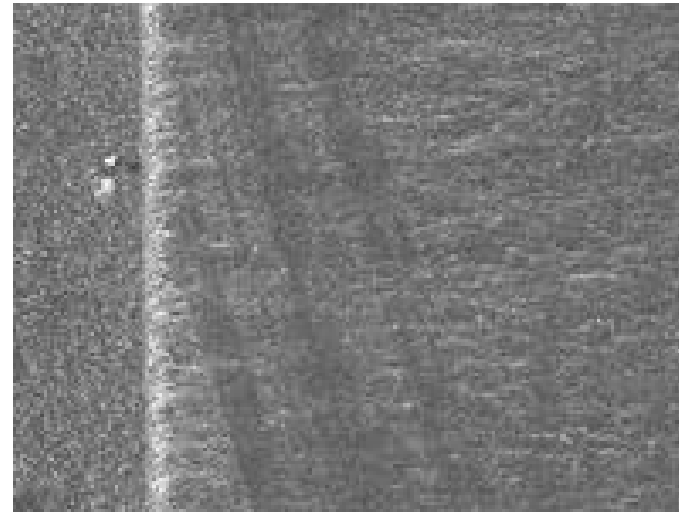
・ 破断サイクル (594)





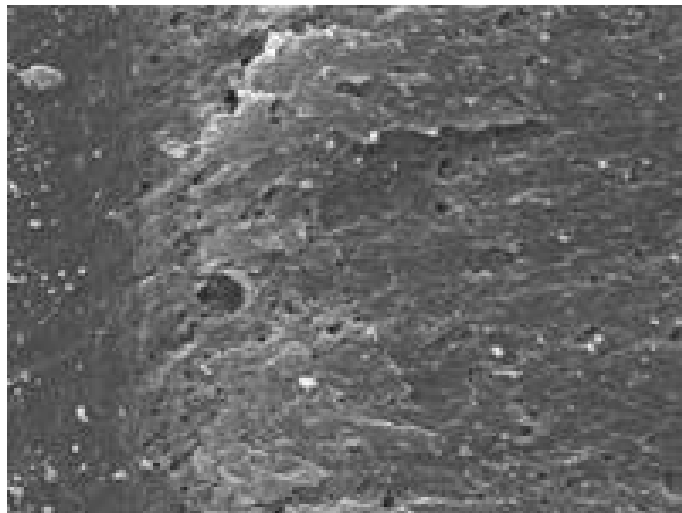
(a) 破壊起点近傍

500  $\mu\text{m}$



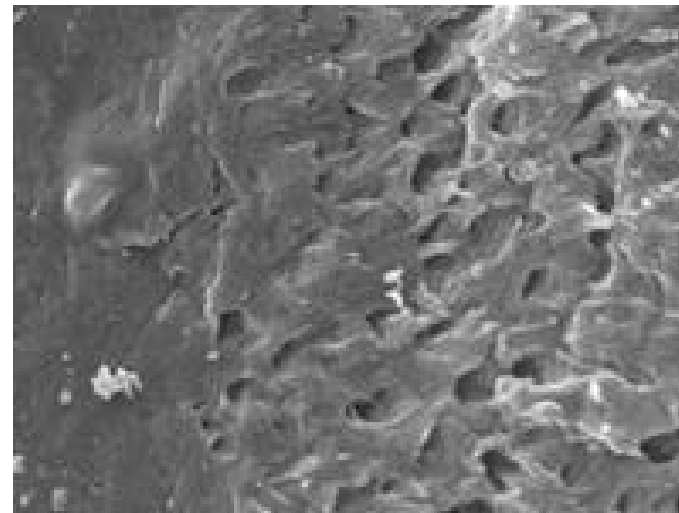
(b) 拡大

50  $\mu\text{m}$



(c) 拡大

5  $\mu\text{m}$



(d) 拡大

1  $\mu\text{m}$