

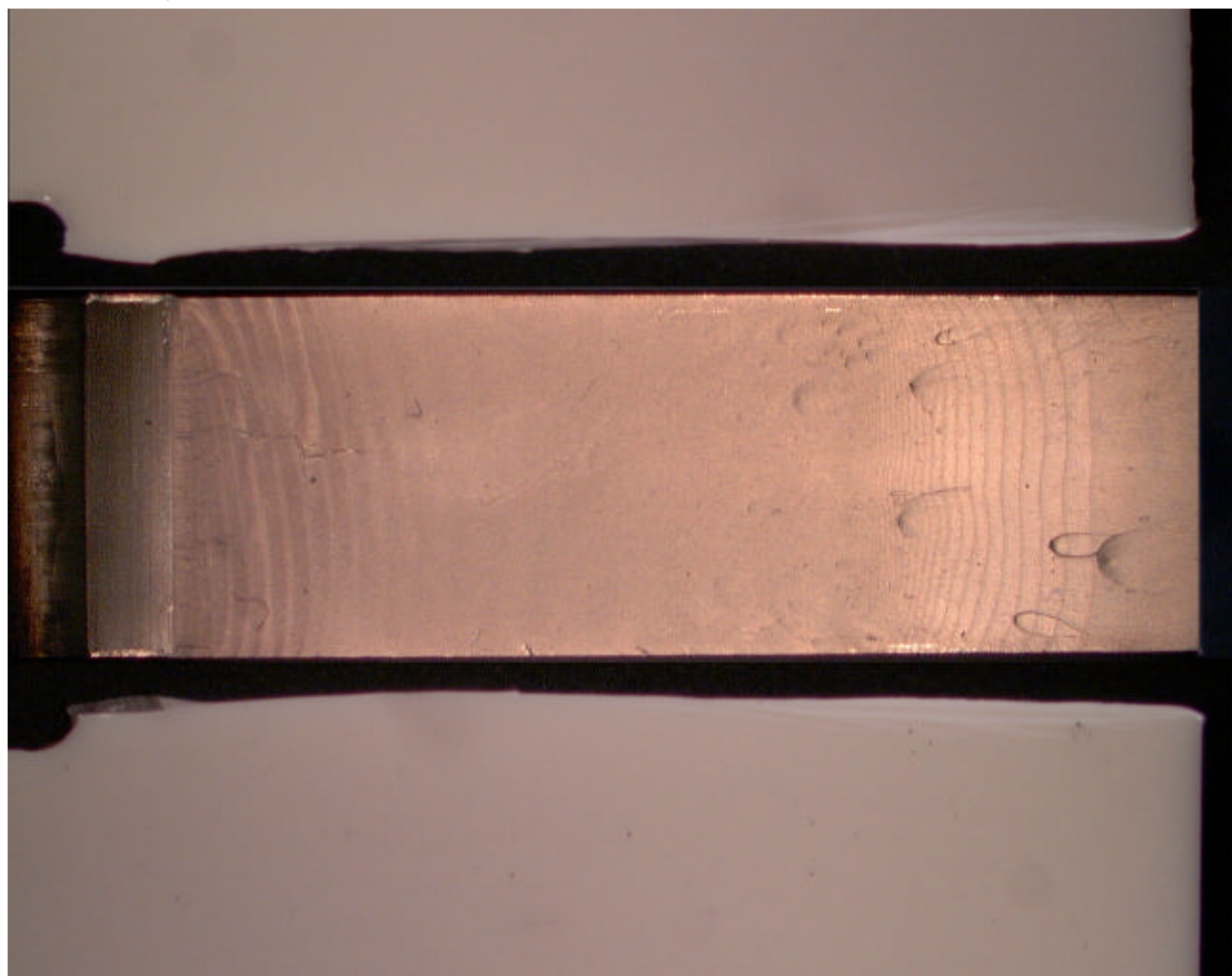
側面



破面



側面



↓ ノッチ

↑ ノッチ

5mm

破壊の進行方向



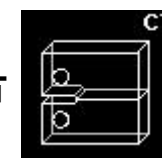
・材料



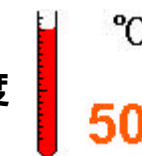
・試験方法



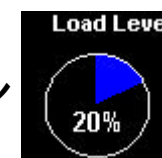
・試験片



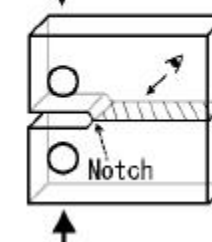
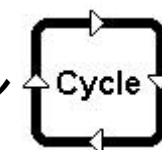
・試験温度

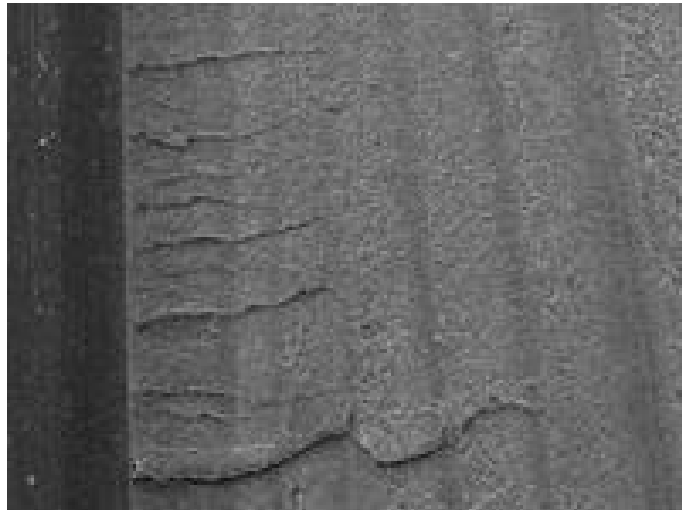


・負荷荷重レベル



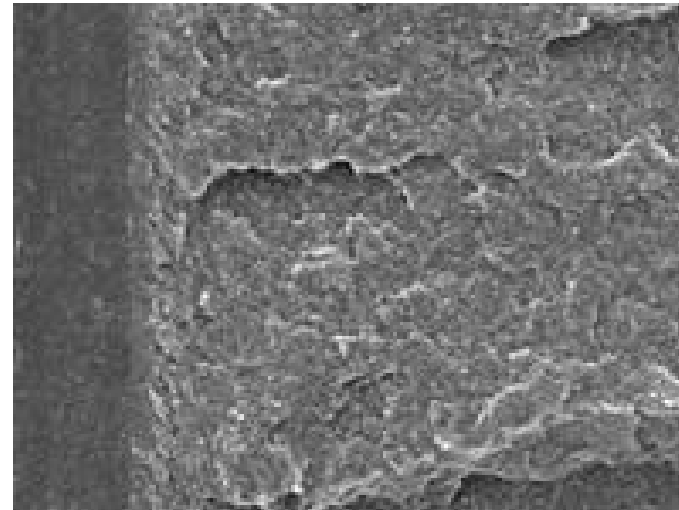
・破断サイクル (10139)





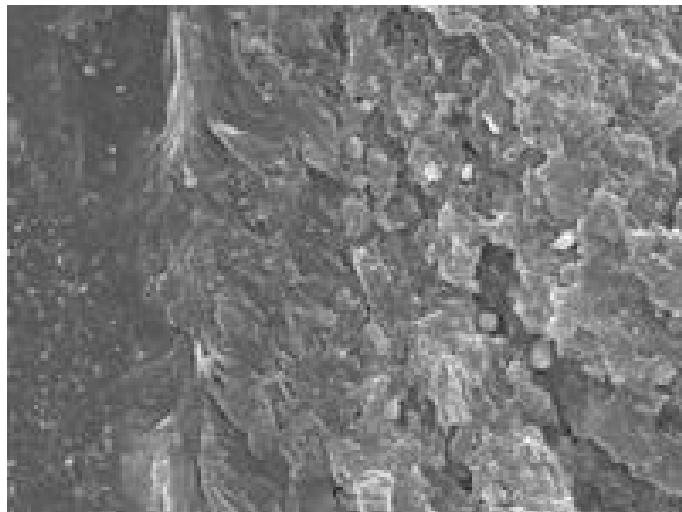
(a) 破壊起点近傍

500 μm



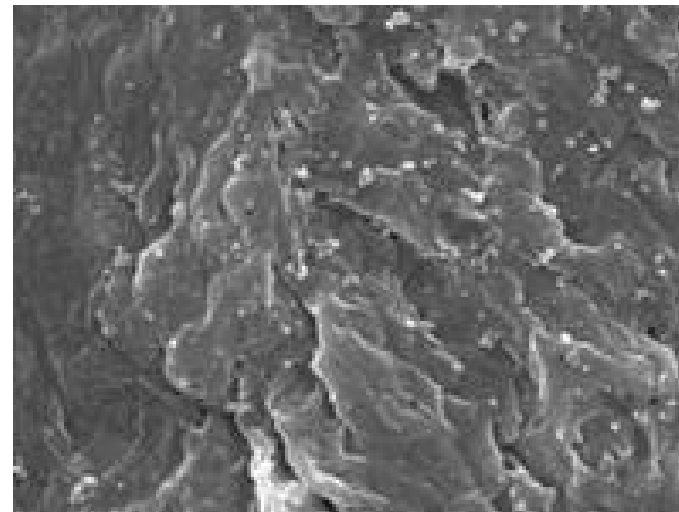
(b) 拡大

50 μm



(c) 拡大

5 μm



(d) 拡大

1 μm