

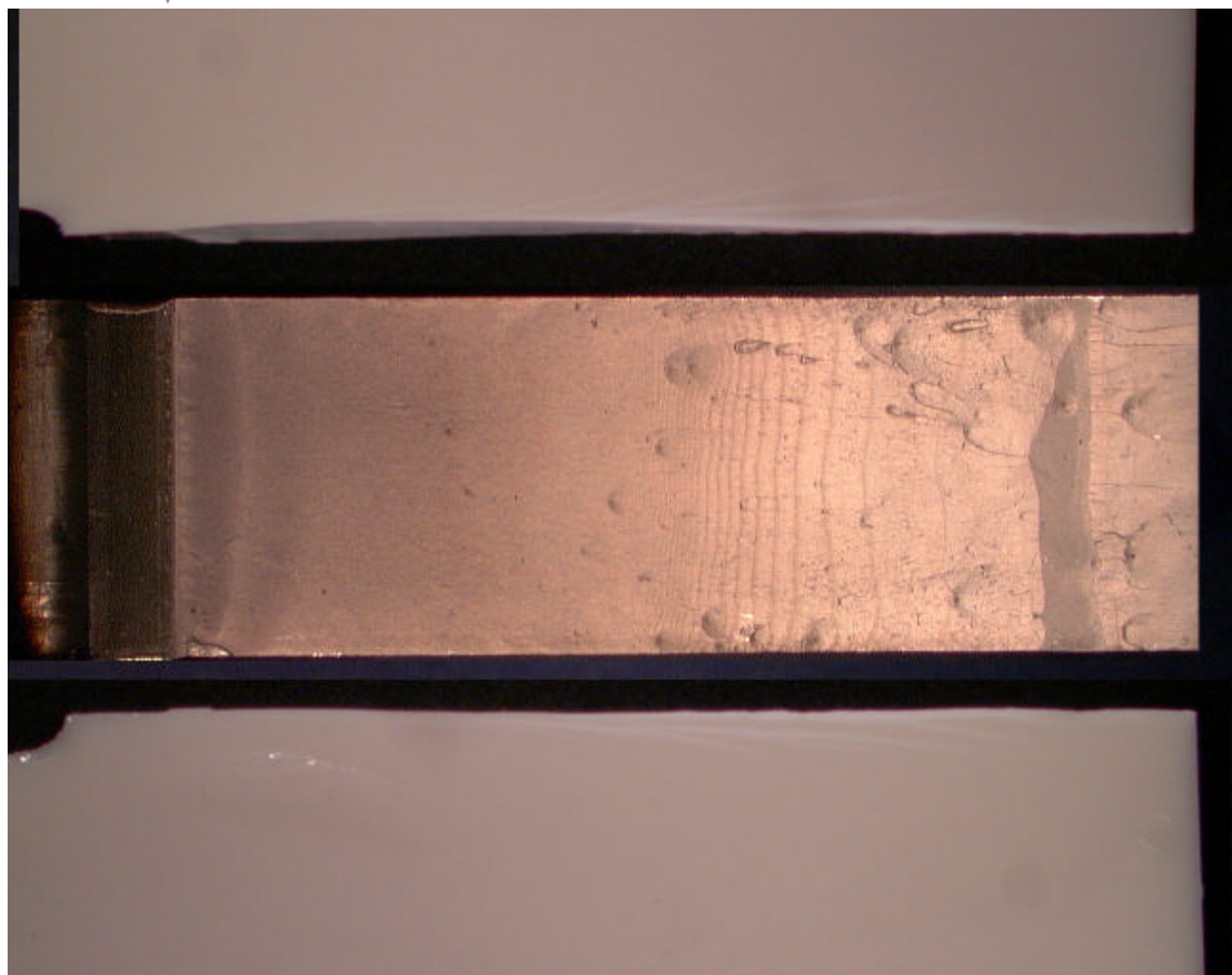
側面



破面



側面



↑ ノッチ

5mm

破壊の進行方向



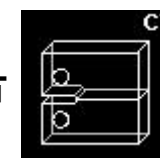
・材料



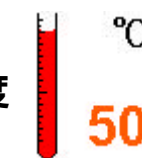
・試験方法



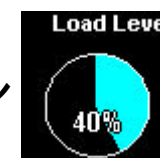
・試験片



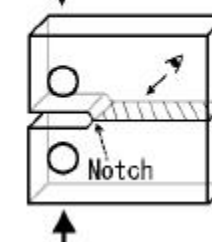
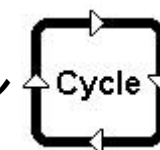
・試験温度

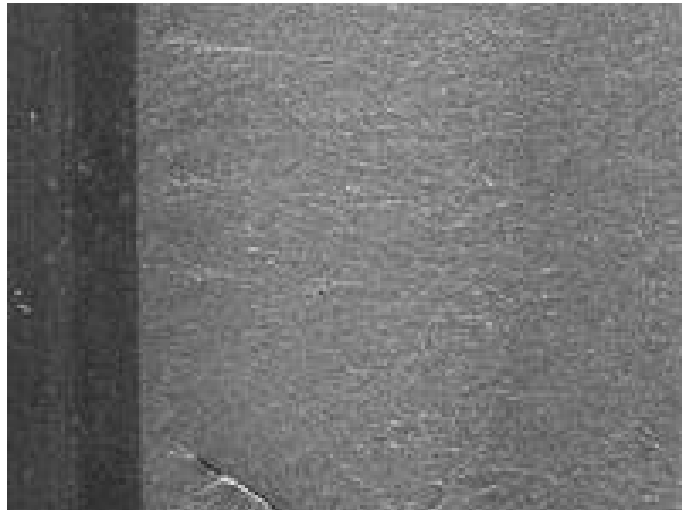


・負荷荷重レベル



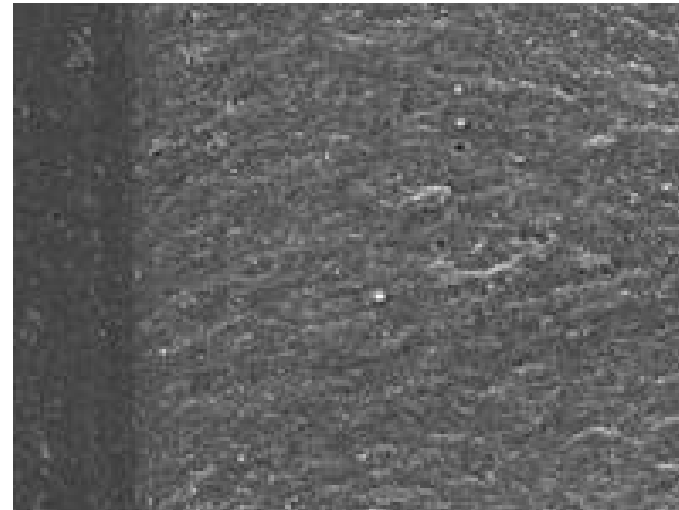
・破断サイクル (826)





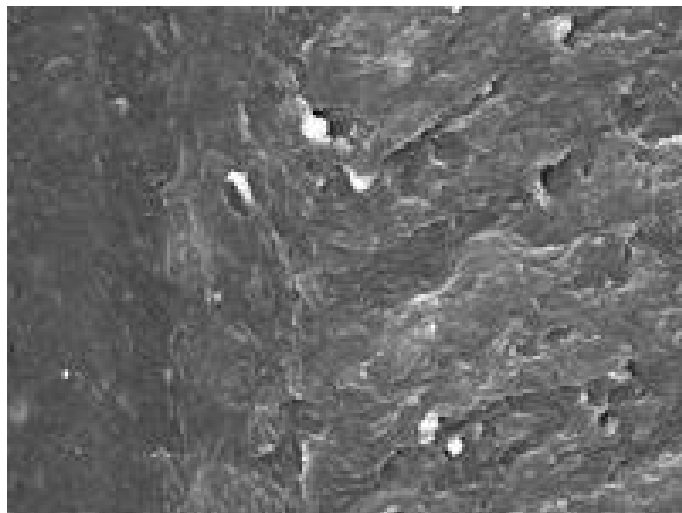
(a) 破壊起点近傍

500  $\mu\text{m}$



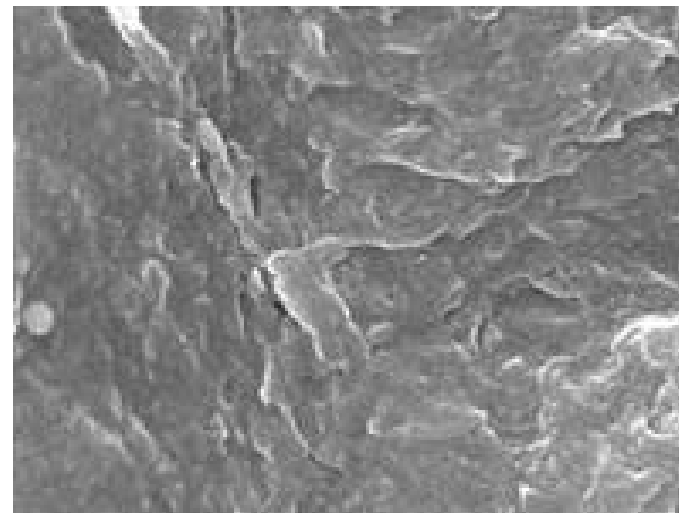
(b) 拡大

50  $\mu\text{m}$



(c) 拡大

5  $\mu\text{m}$



(d) 拡大

1  $\mu\text{m}$