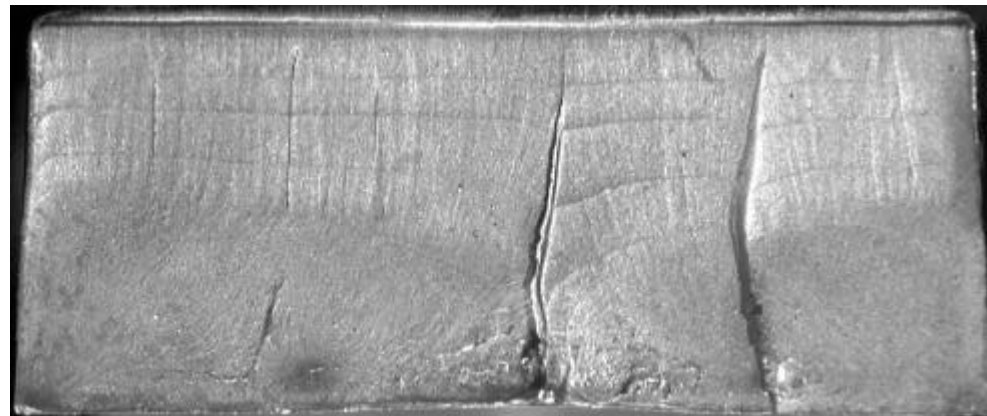


破面及び破壊起点近傍の拡大

光学顕微鏡 (OM) 観察

ID No. 3095



(a) 破面全体

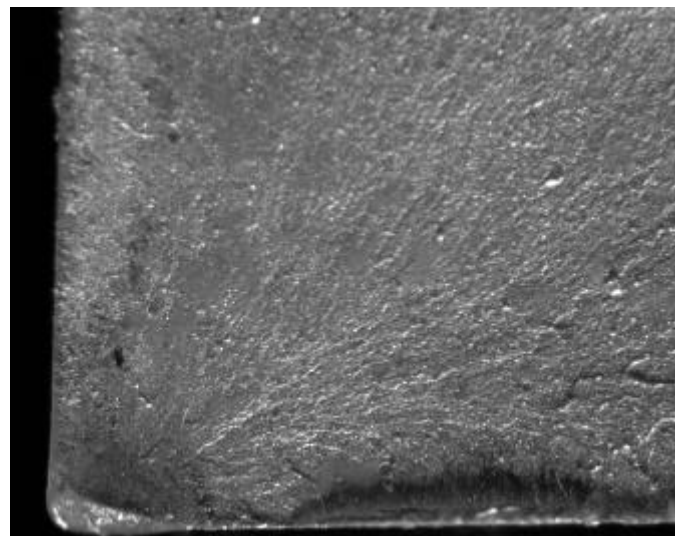
2mm

破壊の進行方向



(b) 破壊起点近傍拡大

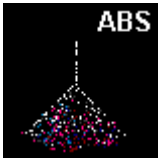
1mm



(c) 破壊起点近傍拡大

0.5mm

・ 材 料



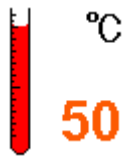
・ 試 験 方 法



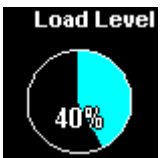
・ 試 験 片



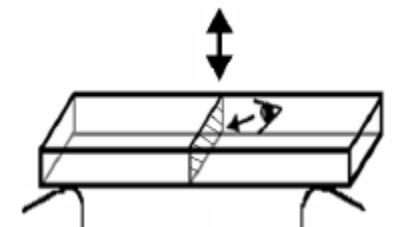
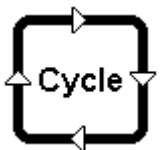
・ 試 験 温 度

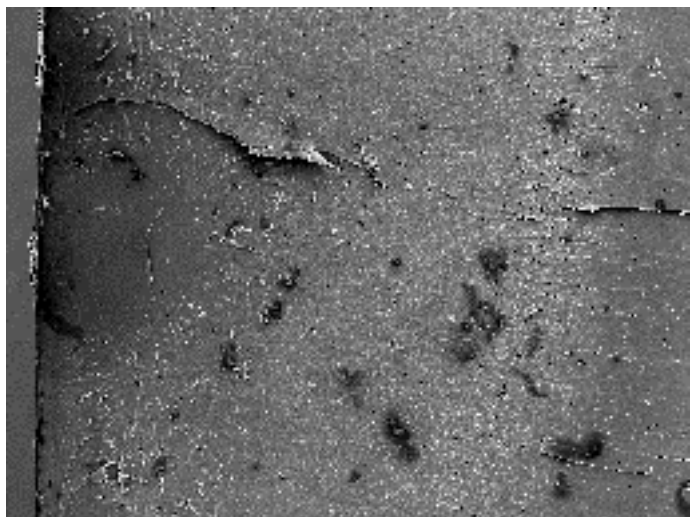


・ 負荷荷重レベル



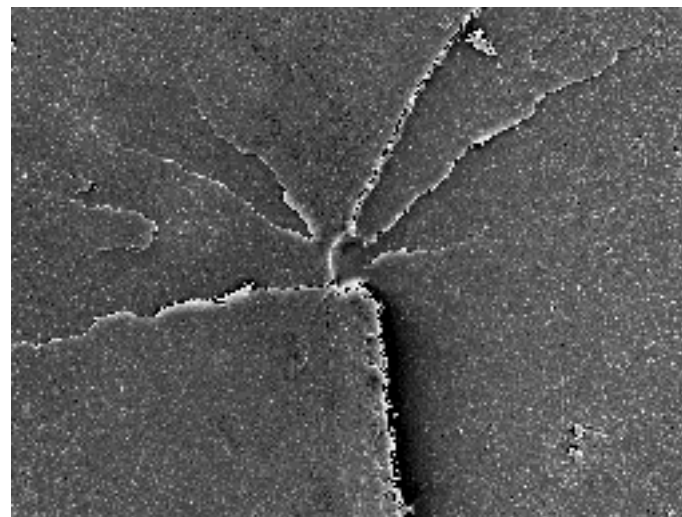
・ 破断サイクル
(12824)





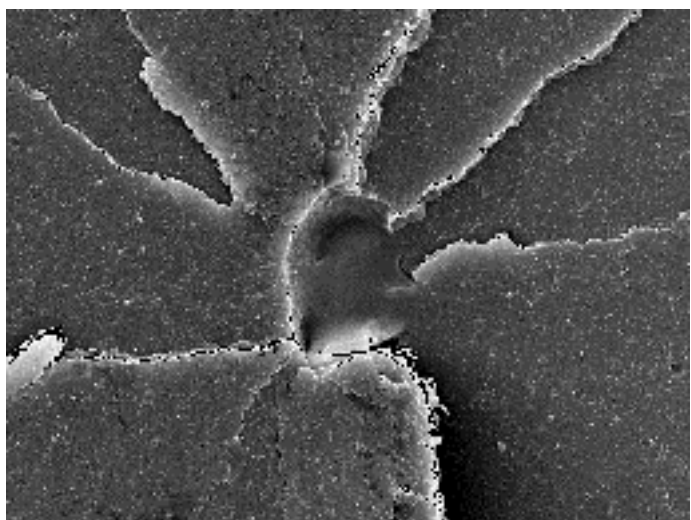
(a) 破壊起点近傍

500 μm



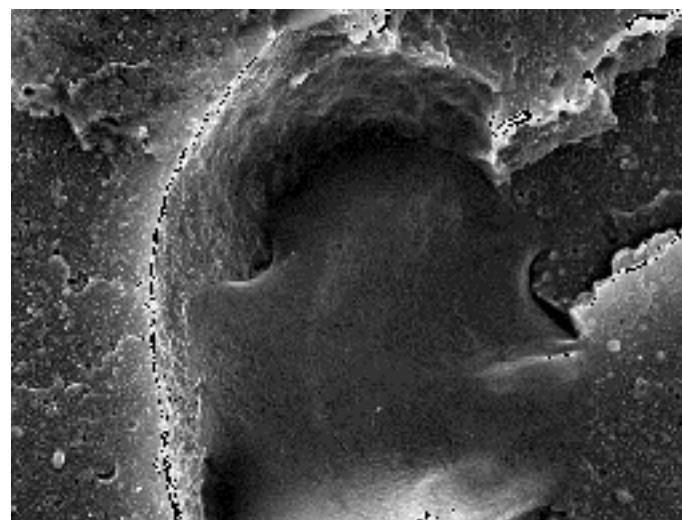
(b) 拡大

50 μm



(c) 拡大

10 μm



(d) 拡大

5 μm