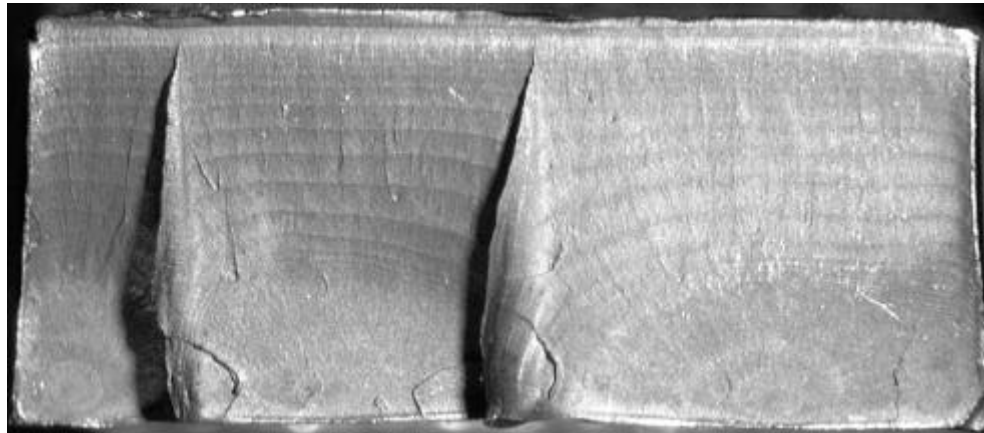


# 破面及び破壊起点近傍の拡大

光学顕微鏡 (OM) 観察

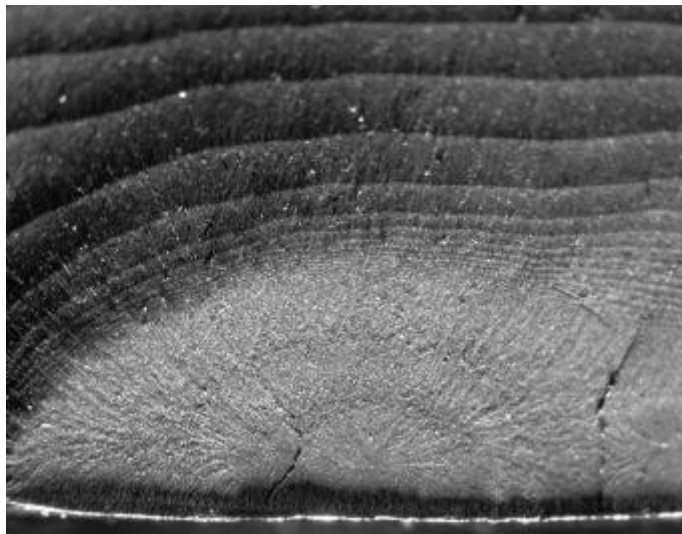
ID No. 3010



(a) 破面全体

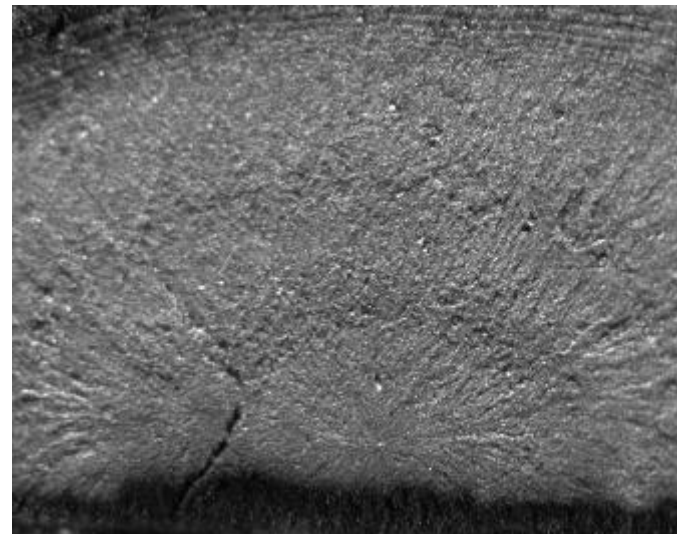
2mm

破壊の進行方向



(b) 破壊起点近傍拡大

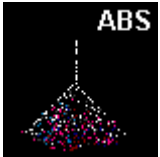
1mm



(c) 破壊起点近傍拡大

0.5mm

・材料



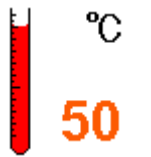
・試験方法



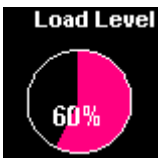
・試験片



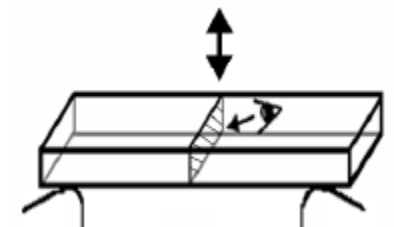
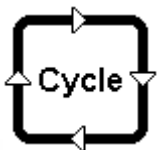
・試験温度

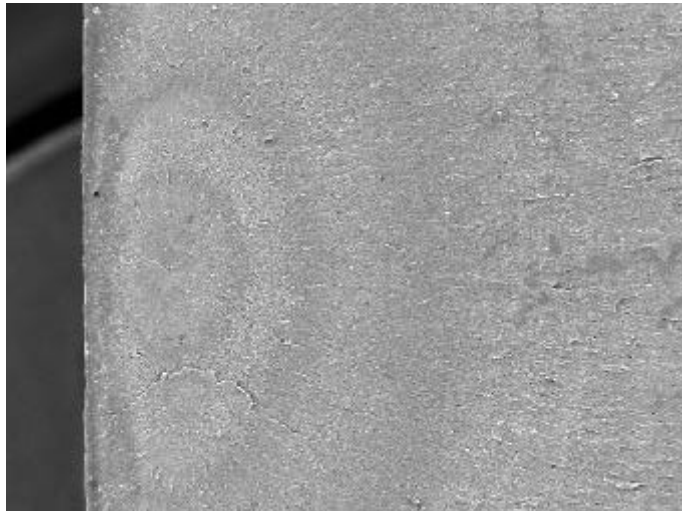


・負荷荷重レベル



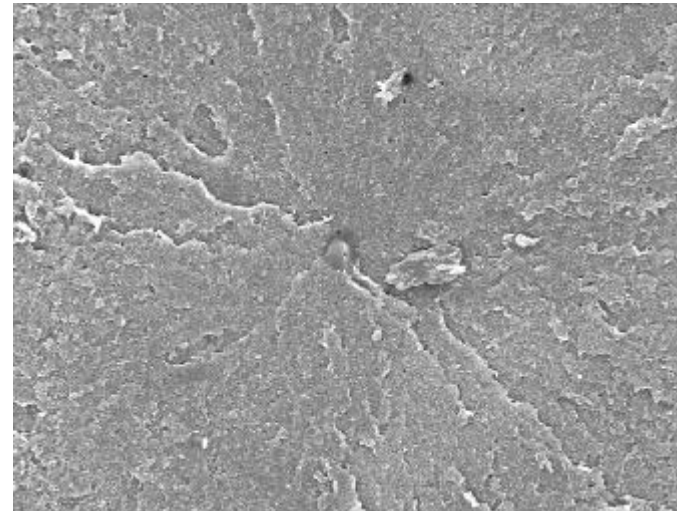
・破断サイクル  
(2567)





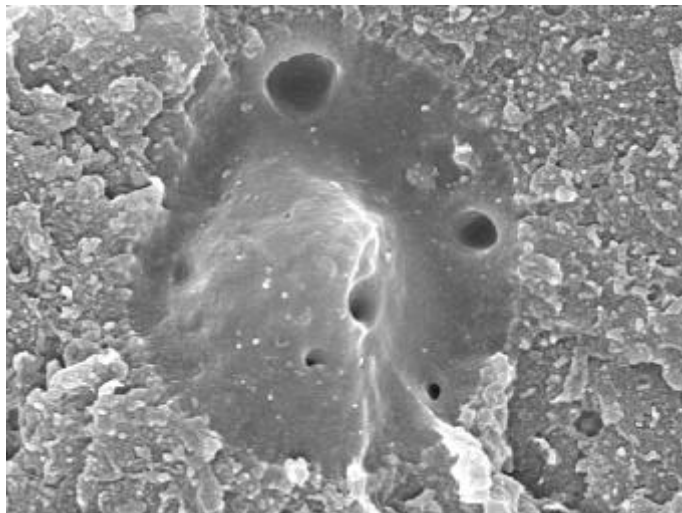
(a) 破壊起点近傍

500 μm



(b) 拡大

50 μm



(c) 拡大

5 μm