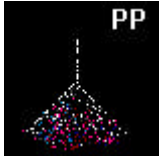


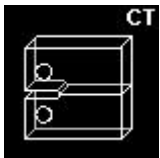
・材料



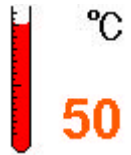
・試験方法



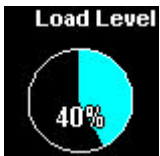
・試験片  
(厚さ B=4mm)



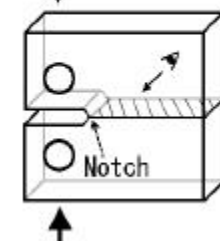
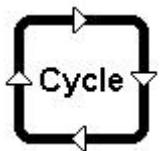
・試験温度

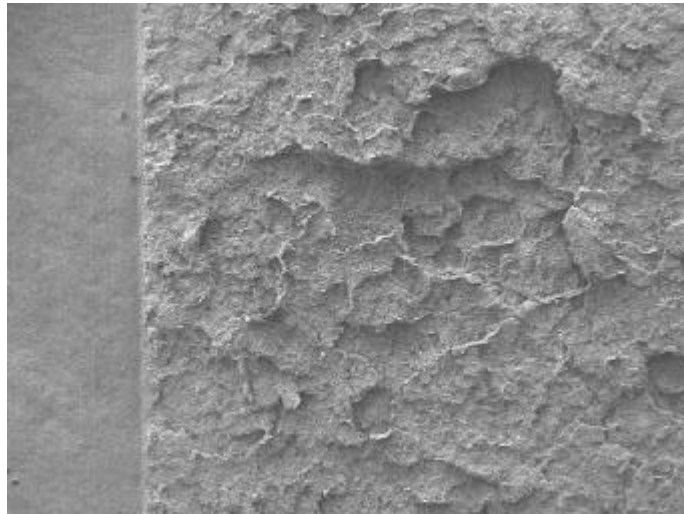


・負荷荷重レベル



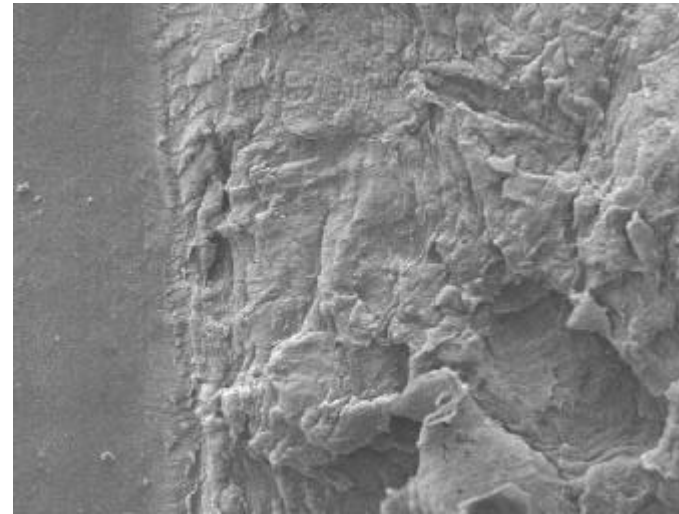
・破断サイクル  
(488071)





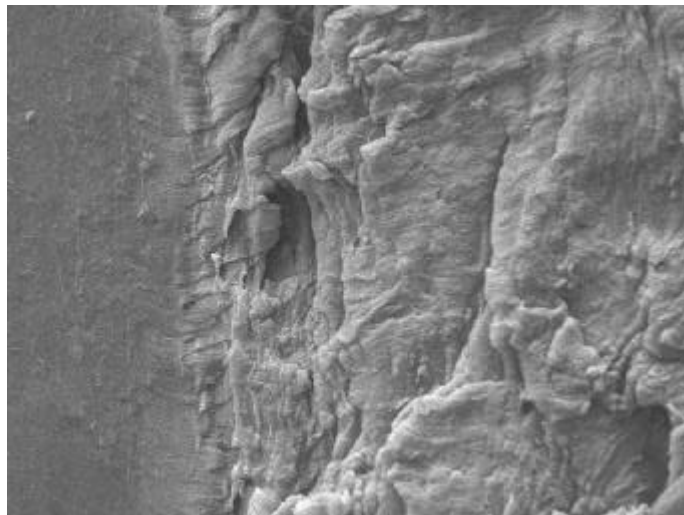
(a) 破壊起点近傍

500  $\mu\text{m}$



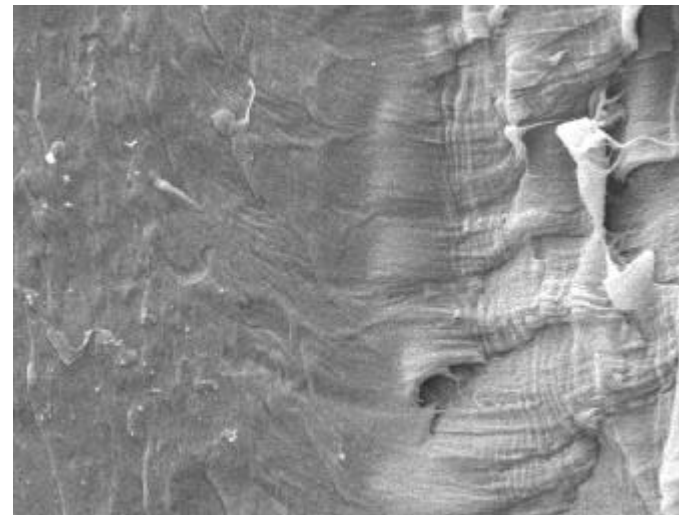
(b) 拡大

50  $\mu\text{m}$



(c) 拡大

20  $\mu\text{m}$



(d) 拡大

5  $\mu\text{m}$