

# 破面及び側面

光学顕微鏡 (OM) 観察

ID No. 3057

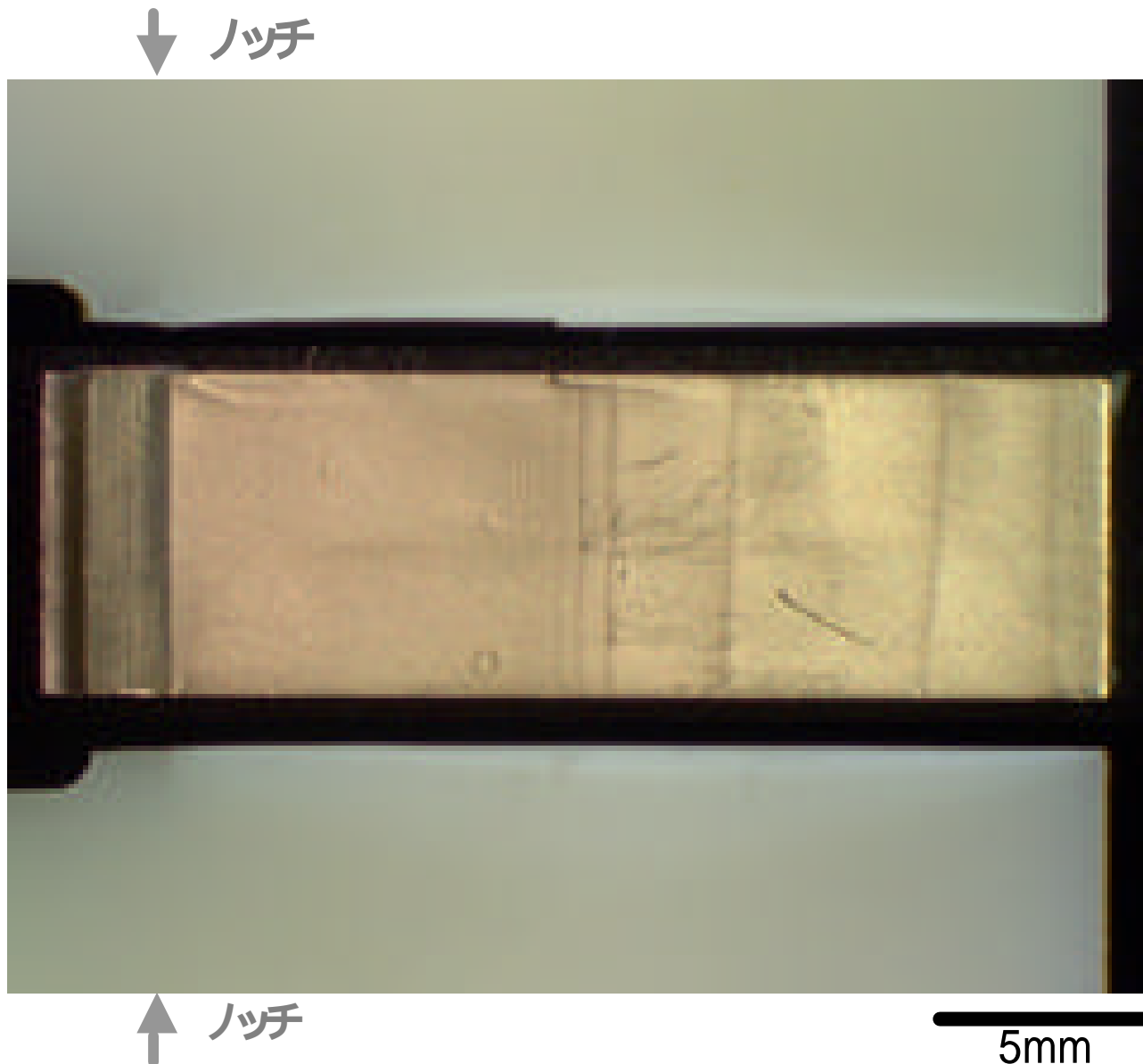
側面



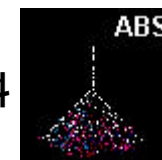
破面



側面



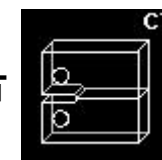
・材料



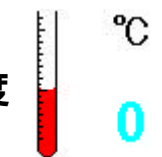
・試験方法



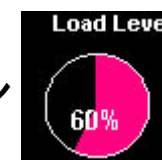
・試験片



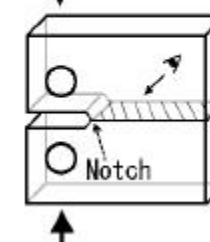
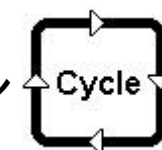
・試験温度

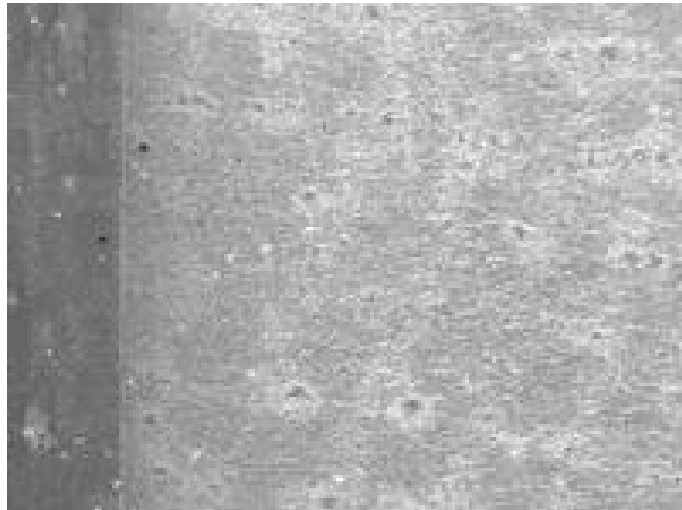


・負荷荷重レベル



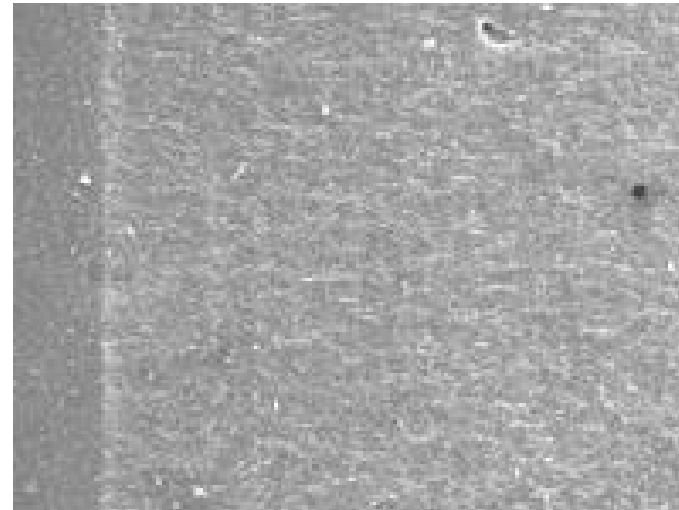
・破断サイクル  
(428)





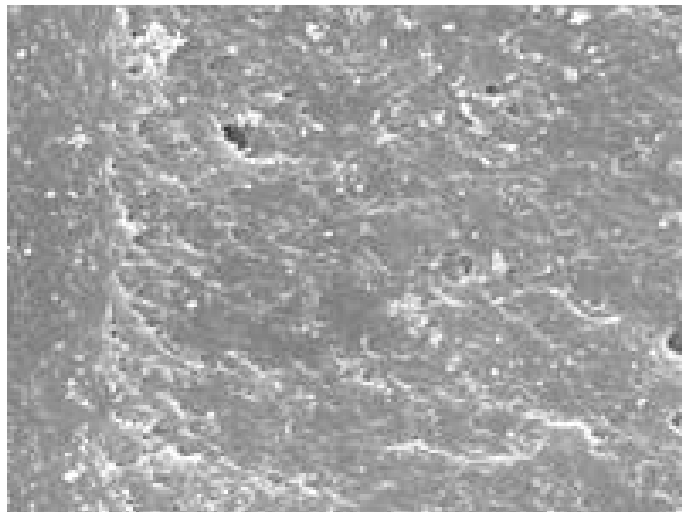
(a) 破壊起点近傍

500 μm



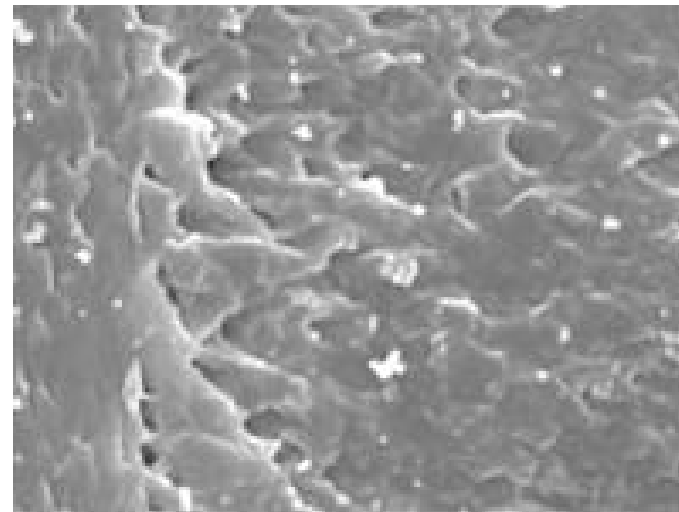
(b) 拡大

50 μm



(c) 拡大

5 μm



(d) 拡大

1 μm